



311SM706-T



Actual product appearance may vary.

SM Series Subminiature Basic Switch, Single Pole Double Throw (SPDT), 250 Vac, 4 A, Roller Lever Actuator, Solder Termination

Features

- Long operating life
- Elongated mounting hole for easier, more accurate mounting
- Choice of actuation (plunger, as well as a variety of integral and auxiliary actuators)
- Choice of electrical termination (solder, quick connect, PCB)
- Choice of operating characteristics (sensitive differential travel as low as 0,0254 mm [0.001 in] maximum, low operating force to 0,56 N [2.0 oz] maximum)
- Optional series constructions available (gold contacts for low energy switching, bifurcated gold contacts for maximum reliability, power load switching capability to 11 A)
- MIL-PFR-8805 qualified listings available

Description

MICRO SWITCH™ SM Series subminiature basic switches are used for simple or precision on/off application needs. The MICRO SWITCH™ SM Series switches are slightly larger than the MICRO SWITCH™ SX Series switches. These switches combine small size and light weight with ample electrical capacity, precision operation and long life.

Potential Applications

- Aerospace
- Instrumentation
- Appliances
- Vending machines
- Timing devices
- Office equipment
- Computer/business equipment
- Test instruments
- Medical/dental equipment
- Communications equipment
- HVAC equipment
- Manually operated devices
- Valves

Product Specifications	
Switch Type	MICRO SWITCH™ Subminiature 12,7 mm H x 6,35 mm W x 20,3 mm L [0.5 in H x 0.25 in W x 0.8 in L]
Sealed	No
Ampere Rating	4 A
Circuitry	Single Pole Double Throw (SPDT)
Actuator	Roller Lever
Termination	Solder
Operating Temperature Range	-53 °C to 121 °C [-65 °F to 250 °F]
Voltage	250 Vac
Approvals	CSA,UL,ENEC
Actuator Length	6,38 mm [0.251 in]
Contact Type	Silver
Operating Force (O.F.)	0,16 N [0.56 oz] max.
Release Force (R.F.)	0,31 N [1.1 oz] min.
Pretravel (P.T.)	2,16 mm [0.085 in] max.
Overtravel (O.T.)	0,46 mm [0.018 in] min.
Differential Travel (D.T.)	0,33 mm [0.013 in] max.
Operating Position (O.P.)	14,2 mm ± 1,5 mm [0.560 in ± 0.060 in]
Housing Material	General Purpose Phenolic
High Temperature	121 °C [250 °F]
CE mark	61058-1
UL File #	E12252
CSA File #	LR41372
Agency Approvals and Standards	1054
Mounting Screw Size	22,1 mm [0.087 in]
Mounting Centers	9,65 mm [0.38 in]
Maximum Tightening Torque	0,26 N m [2.3 in lb]
Weight	2,72 g [0.006 lb]
Package Height	12,4 mm [0.49 in]
Package Width	6,35 mm [0.25 in]
Package Length	19,8 mm [0.78 in]
Recommended For	Roller lever
Availability	Global
UNSPSC Code	30211905
UNSPSC Commodity	30211905 Snap switches
Series Name	SM

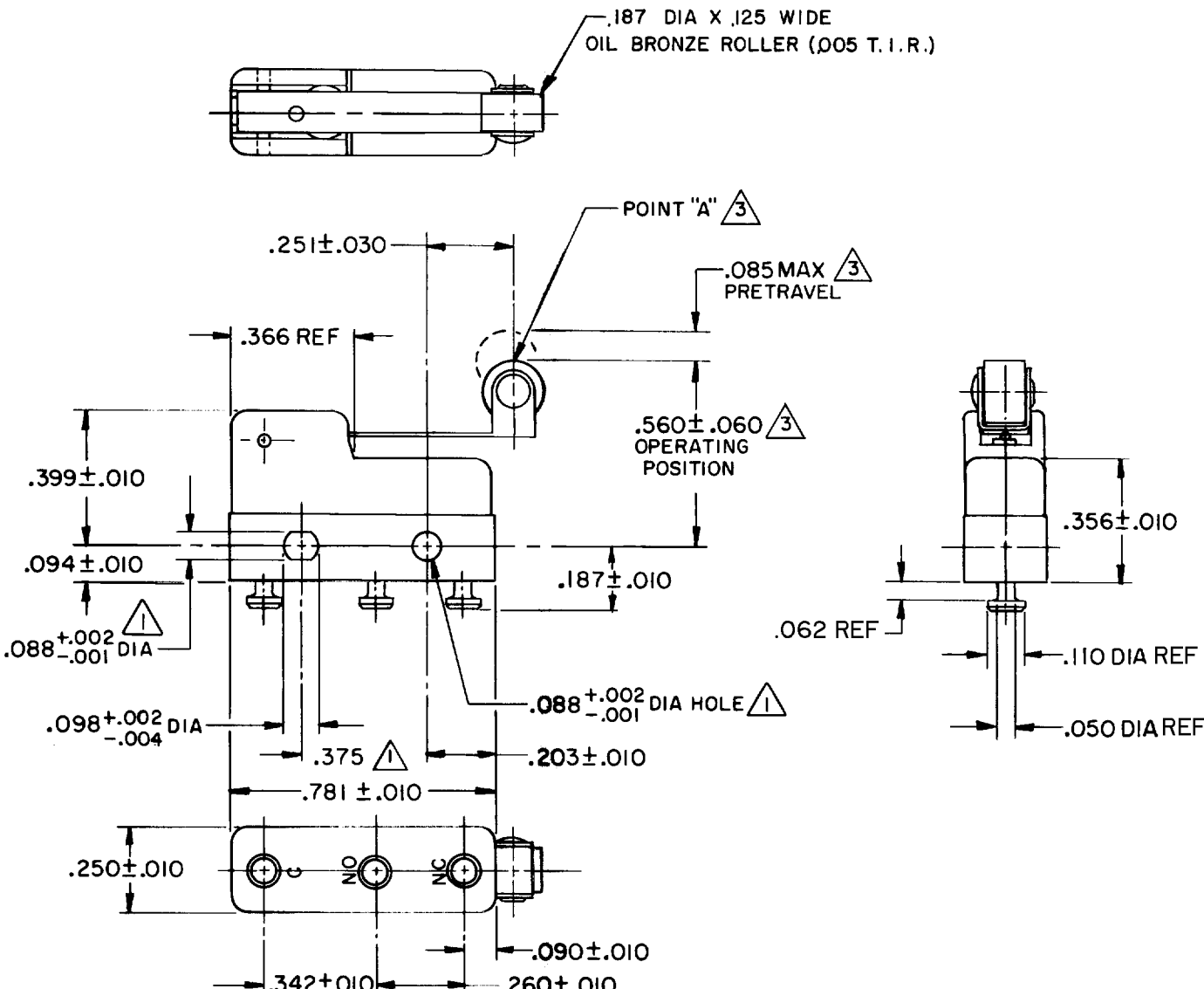
MICRO SWITCH

FREEPORT ILLINOIS, U.S.A
A DIVISION OF HONEYWELL
FED. CODE. CODE 91929

SWITCH - BASIC

CATALOG LISTING
31ISM706-T

DRAWING NUMBER: **31ISM706-T**
 PAGE 1 OF 1
 RELEASE NO. PR-1059
 REPLACES:
 ISSUE: **M**
 8
 REVISIONS:
 A CO31079 RER 28 NOV 72
 B CO-36673 KSW 19 FEB 76
 C CO-95172 JJA 21 JUNE 99
 D CO95591 DLT 28 OCT 99
 E 202140 GRT 2 FEB 01
 CHECK 72 DEC 8 PRW 8 DEC 8
 CHECK 72 DEC 8 LRD 8 DEC 8
 DRAWN: **RASTER**
 FO-52848
 RER 28 NOV 72



- NOTES
- (1) MOUNTING HOLES WILL ACCEPT PINS OR SCREWS OF .087 MAX DIA ON .375 ± .002 CENTERS
 - 2- SWITCH WILL WITHSTAND TEMPERATURE OF 250°F
 - (3) CHARACTERISTICS TAKEN AT POINT "A"
 - 4- TERMINALS ARE PLATED FOR SOLDERING

THIS DRAWING COVERS A PROPRIETARY ITEM AND IS THE PROPERTY OF MICRO SWITCH, A DIVISION OF HONEYWELL. THIS DRAWING IS NOT TO BE COPIED OR USED WITHOUT THE APPROVAL OF MICRO SWITCH.

CHARACTERISTICS (3)	ELECTRICAL DATA	SCALE 2 TO 1
OPERATING FORCE----- 16 GRAM MAX	CONTACT ARRANGEMENT S P D T	DO NOT SCALE PRINT
RELEASE FORCE----- 3 GRAM MIN	30 VOLTS DC RATING	UNLESS OTHERWISE NOTED DIMENSIONS ARE IN INCHES
DIFFERENTIAL TRAVEL----- .013 MAX	INDUCTIVE ----- SEA LEVEL--- 3 AMP 50,000 FT--- 2.5 AMP	TOLERANCES ARE
OVERTRAVEL----- .018 MIN	RESISTIVE ----- SEA LEVEL--- 5 AMP 50,000 FT--- 5 AMP	ONE PLACE (.0) ± .030
	MAXIMUM INRUSH ----- 24 AMP	TWO PLACE (.00) ± .015
	L119	THREE PLACE (.000) ± .005
	4A 250 VAC	ANGLES ±
		WEIGHT .006 LB MAX